



214.800.2300

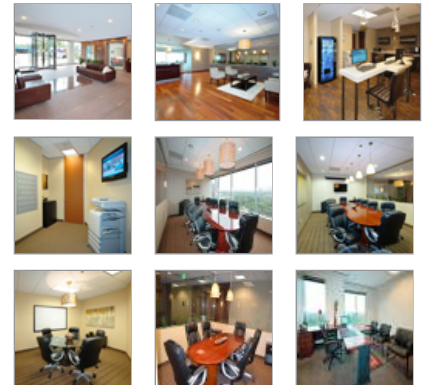

[HOME](#) | [PROPERTIES](#) | [VIRTUAL TOURS & VIDEOS](#) | [PHOTOS](#) | [BROKER REFERRALS](#)
EXECUTIVE OFFICE
SUITESON-DEMAND
MEETING ROOMSON-DEMAND
TRAINING ROOMSVIRTUAL OFFICE
SOLUTIONSVIDEO CONFERENCE
SOLUTIONS

UPTOWN DALLAS MCKINNEY AVENUE EXECUTIVE OFFICE SUITES

214.800.2300

3131 McKinney Ave.
Suite 600
Dallas, Texas 75204

START MY VIRTUAL TOUR



View 6th Floor Plan

Print 6th Floor Plan

View 5th Floor Plan

Print 5th Floor Plan

View Area Amenities Guide

UPTOWN MCKINNEY AVENUE EXECUTIVE OFFICE SUITES*

All-Inclusive Executive Office Suites from \$495/mo.

PROPERTY INFORMATION:

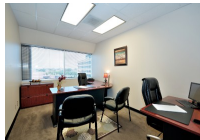
Located conveniently at the corner of McKinney Ave. and Bowen Street, with quick access to both I-75/Central Expressway and the Dallas North Tollway. The 13-story property is located in the heart of the upscale Uptown/Turtle Creek community. Only 10 minutes from Dallas Love Field Airport and 25 minutes from DFW International Airport. Our center has views from the 11th floor where you'll find four conference rooms, video conference equipment, a full kitchen, and plenty of garage parking available – along with trained professional staff members to handle your business needs.

130sf INTERIOR



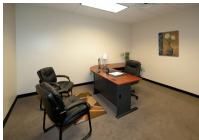
1 person
6 - 24 Month
Contracts

150sf EXTERIOR



1 - 2 people
6 - 24 Month
Contracts

150sf INTERIOR



1 - 2 people
6 - 24 Month
Contracts

235sf INTERIOR



1 - 3 people
6 - 24 Month
Contracts

300sf EXTERIOR



1 - 4 people
6 - 24 Month
Contracts

*Views Vary by Location. Inquire for Furniture Rental Rates.

THE MERIDIAN DIFFERENCE: Meridian's **Truly All-Inclusive** pricing philosophy is based on providing a clear and transparent picture of **Your Bottom Line.**

MERIDIAN'S EXECUTIVE OFFICE SUITE SERVICES	ALL-INCLUSIVE PRICING
Monthly Rent in a Full Service Facility	\$
Local Telephone Number	Included
Telephone Handset (Includes 3 Lines)	Included
Speaker Phone with Caller ID, Transfer, Conference, and More!	Included
Voice Mail with 24 Hour Remote Access	Included
Personalized Call Answering by Receptionist (8:30am - 5:00pm, M-F)	Included
Call Screening & Transfer to your Office	Included
Enterprise Grade Internet (Up to 100Mbps)	Included
55 Hours of Meeting Room Usage per Month available at any Meridian Property	Included
Parking	Included
Premium Coffee & Filtered Water Service	Included
Utilities	Included
Janitorial & Maintenance	Included
Building Lobby Directory Listing	Included
24 Hour Access	Included
Kitchen Services	Included

Request Information

First Name:

Last Name:

Company Name:

Phone Number:

Email:

Property Interested In:

Product Interested In:

Full Service Office

Request a Tour:

Number of People:

Move-in Date:

Submit



Services as Small as Unlocking your Door or Delivering a Package to your Office	Included
Signature Furniture Package	Optional \$45.00 per Month
Executive Furniture Package	Optional \$75.00 per Month
A LA CARTE ADDITIONAL CHARGES WILL APPLY WITH OUR COMPETITION	

Come See Why Smarter Companies are Choosing Meridian Business Centers

Property Features:

- Upscale Reception Area With Wood Flooring
- 12th Floor Views
- Prestigious Address: Class A building located on well-known McKinney Avenue
- Multiple Conference Rooms On-Site
- Kitchen On-Site With Complimentary Beverage Service
- Proximity to Downtown, Turtle Creek, Highland Park and the Park Cities
- Office Space Ranging From 120sf-300sf With Flexible Lease Terms Available
- High-Speed Internet Access
- State-Of-The-Art IP PBX Telephone System with Speakerphone, Caller ID, and Multiple Rollovers
- Optional FollowMe Technology Including Voicemail to Email, Efax, etc.
- Complimentary Garage Parking
- Multiple Copiers On-Site
- Personalized Telephone Support with Call Screening
- Postage Meter & Courier Services
- Personal Office Assistant Services
- Furniture Packages Available